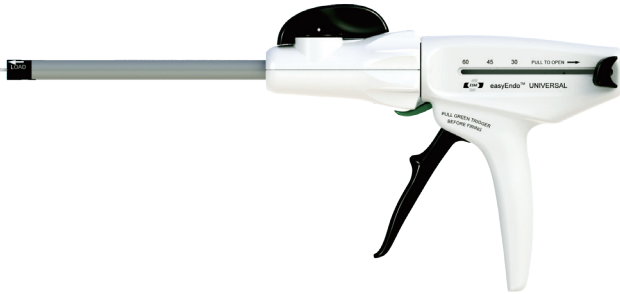


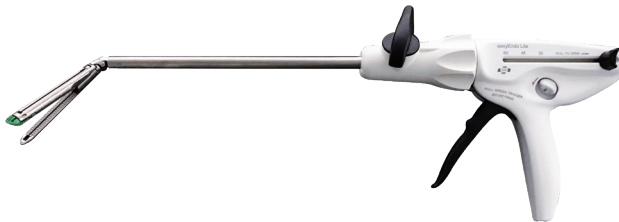
Products

Surgical Stapling



easyEndo™ UNIVERSAL

Endoliner Cutting Staplers and Loading Units for Single Use



easyEndo™ Lite

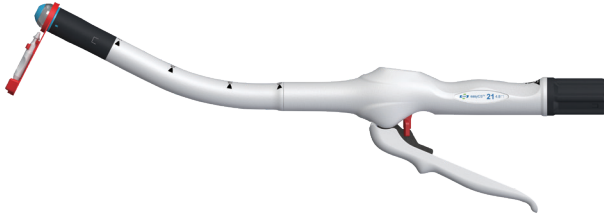
Endoliner Cutting Staplers and Cartridges for Single Use



easyLC™

Linear Cutting Staplers and Cartridges for Single Use

Surgical Stapling



easyCS™

Circular Staplers for Single Use

Energy

easyUS™

Ultrasonic Surgical Systems



Surgical Stapling



easyEndo™ LINEAR CUTTER

Product Series	Product Code	Shaft Length	Articulation	Maximum Firing	EA/BX
EasyEndo I	F12S	70mm	No	25	3
EasyEndo I	F12M	160mm	No	25	3
EasyEndo I	F12L	250mm	No	25	3

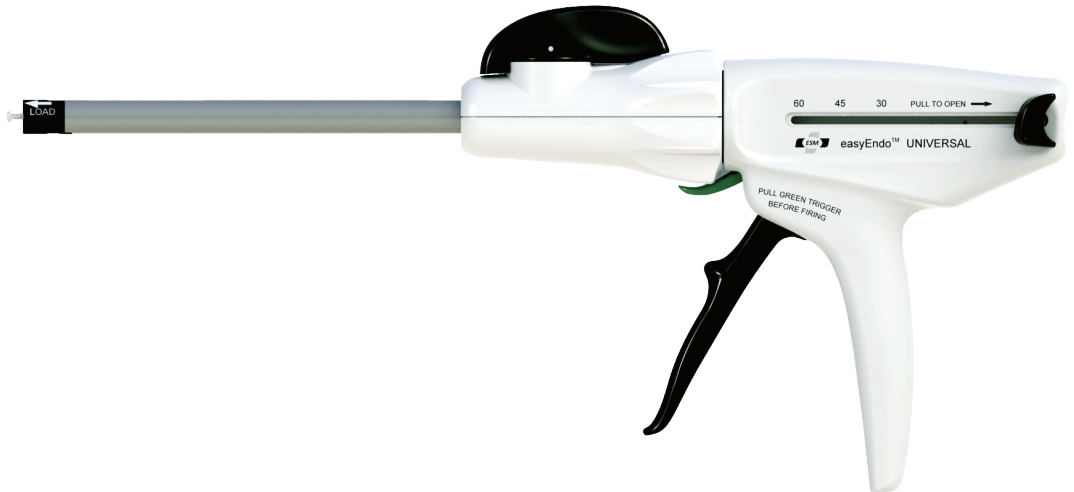
easyEndo™ STRAIGHT

Product Series	Product Code	Cartridge Color	Number of Staple Rows	Tissue Thickness	Open Staple Height	Closed Staple Height	EA/BX
EasyEndo I loading unit	FDU 45W	White	6	Vascular/Thin	2.5	1.0	18
EasyEndo I loading unit	FDU 45B	Blue	6	Regular	3.5	1.5	18
EasyEndo I loading unit	FDU 45G	Green	6	Thick	4.1	2.0	18
EasyEndo I loading unit	FDU 60B	Blue	6	Regular	3.5	1.5	18
EasyEndo I loading unit	FDU 60G	Green	6	Thick	4.1	2.0	18



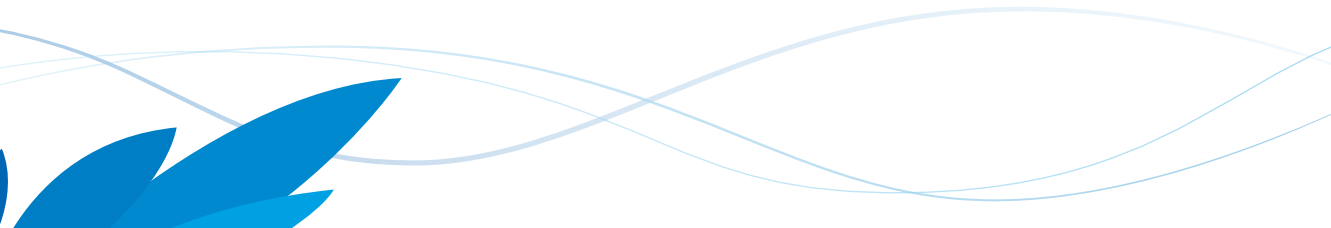
easyEndo™ PRO/FLEX

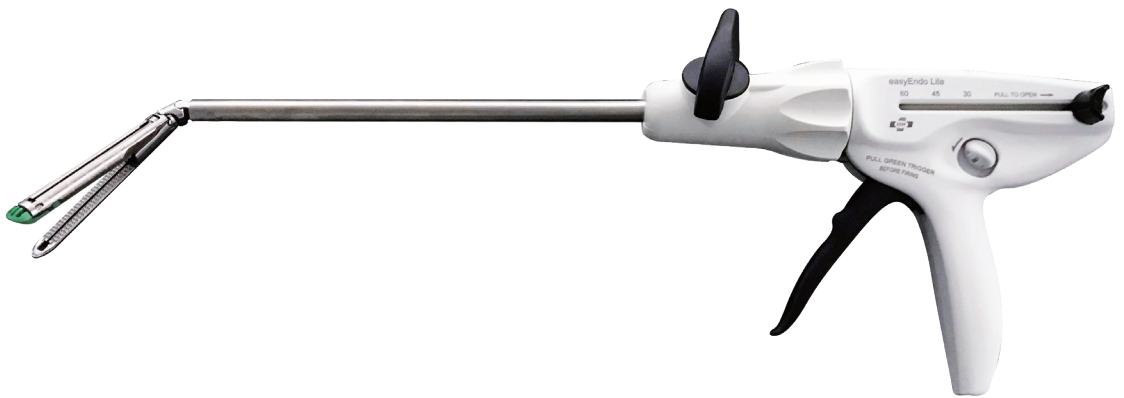
Product Series	Product Code	Cartridge Color	Number of Staple Rows	Tissue Thickness	Open Staple Height	Closed Staple Height	EA/BX
EasyEndo II-Pro loading unit	L30W	White	6	Vascular/Thin	2.5	1.0	18
EasyEndo II-Pro loading unit	L30B	Blue	6	Regular	3.5	1.5	18
EasyEndo II-Pro loading unit	L45W	White	6	Vascular/Thin	2.5	1.0	18
EasyEndo II-Pro loading unit	L45B	Blue	6	Regular	3.5	1.5	18
EasyEndo II-Pro loading unit	L45C	Gold	6	Regular/thick	3.8	1.7	18
EasyEndo II-Pro loading unit	L45G	Green	6	Thick	4.1	2.0	18
EasyEndo II-Pro loading unit	L60W	White	6	Vascular/Thin	2.5	1.0	18
EasyEndo II-Pro loading unit	L60B	Blue	6	Regular	3.5	1.5	18
EasyEndo II-Pro loading unit	L60C	Gold	6	Regular/thick	3.8	1.7	18
EasyEndo II-Pro loading unit	L60G	Green	6	Thick	4.1	2.0	18
EasyEndo II-Flex loading unit	R30M	Grey	6	Mesentery/thin	2.0	0.75	18
EasyEndo II-Flex loading unit	R30W	White	6	Vascular/Thin	2.5	1.0	18
EasyEndo II-Flex loading unit	R30B	Blue	6	Regular	3.5	1.5	18
EasyEndo II-Flex loading unit	R45M	Grey	6	Mesentery/thin	2.0	0.75	18
EasyEndo II-Flex loading unit	R45W	White	6	Vascular/Thin	2.5	1.0	18
EasyEndo II-Flex loading unit	R45B	Blue	6	Regular	3.5	1.5	18
EasyEndo II-Flex loading unit	R45C	Gold	6	Regular/thick	3.8	1.7	18
EasyEndo II-Flex loading unit	R45G	Green	6	Thick	4.1	2.0	18
EasyEndo II-Flex loading unit	R60W	White	6	Vascular/Thin	2.5	1.0	18
EasyEndo II-Flex loading unit	R60B	Blue	6	Regular	3.5	1.5	18
EasyEndo II-Flex loading unit	R60C	Gold	6	Regular/thick	3.8	1.7	18
EasyEndo II-Flex loading unit	R60G	Green	6	Thick	4.1	2.0	18
EasyEndo II-Flex loading unit	R60T	Black	6	Very Thick	4.4	2.2	18
EasyEndo II-Flex loading unit	R30MG	Grey	6	Mesentery/thin	2.0	0.75	18
EasyEndo II-Flex loading unit	R30WG	White	6	Vascular/Thin	2.5	1.0	18
EasyEndo II-Flex loading unit	R45MG	Grey	6	Mesentery/thin	2.0	0.75	18
EasyEndo II-Flex loading unit	R45WG	White	6	Vascular/Thin	2.5	1.0	18



easyEndo™ UNIVERSAL

Product Series	Product Code	Shaft Length	Articulation	Maximum Firing	EA/BX
EasyEndo II	U12S	70mm	Yes	25	3
EasyEndo II	U12M	160mm	Yes	25	3
EasyEndo II	U12L	250mm	Yes	25	3





easyEndo™ Lite

Product Series	Product Code	Shaft Length	Articulation	Maximum Firing	EA/BX
EasyEndo III	U12S45	260mm	Yes	13	3
EasyEndo III	U12M45	350mm	Yes	13	3
EasyEndo III	U12L45	440mm	Yes	13	3
EasyEndo III	U12S60	260mm	Yes	13	3
EasyEndo III	U12M60	350mm	Yes	13	3
EasyEndo III	U12L60	440mm	Yes	13	3

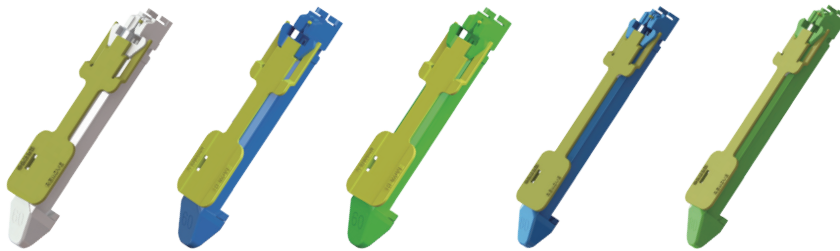


Product Series	Product Code	Cartridge Color	Number of Staple Rows	Tissue Thickness	Open Staple Height	Closed Staple Height	EA/BX
EasyEndo III loading unit	N45M	Grey	6	Mesentery/thin	2.0	0.75	18
EasyEndo III loading unit	N45W	White	6	Vascular/Thin	2.5	1.0	18
EasyEndo III loading unit	N45B	Blue	6	Regular	3.5	1.5	18
EasyEndo III loading unit	N45C	Gold	6	Regular/thick	3.8	1.7	18
EasyEndo III loading unit	N45G	Green	6	Thick	4.1	2.0	18
EasyEndo III loading unit	N60M	Grey	6	Mesentery/thin	2.0	0.75	18
EasyEndo III loading unit	N60W	White	6	Vascular/Thin	2.5	1.0	18
EasyEndo III loading unit	N60B	Blue	6	Regular	3.5	1.5	18
EasyEndo III loading unit	N60C	Gold	6	Regular/thick	3.8	1.7	18
EasyEndo III loading unit	N60G	Green	6	Thick	4.1	2.0	18

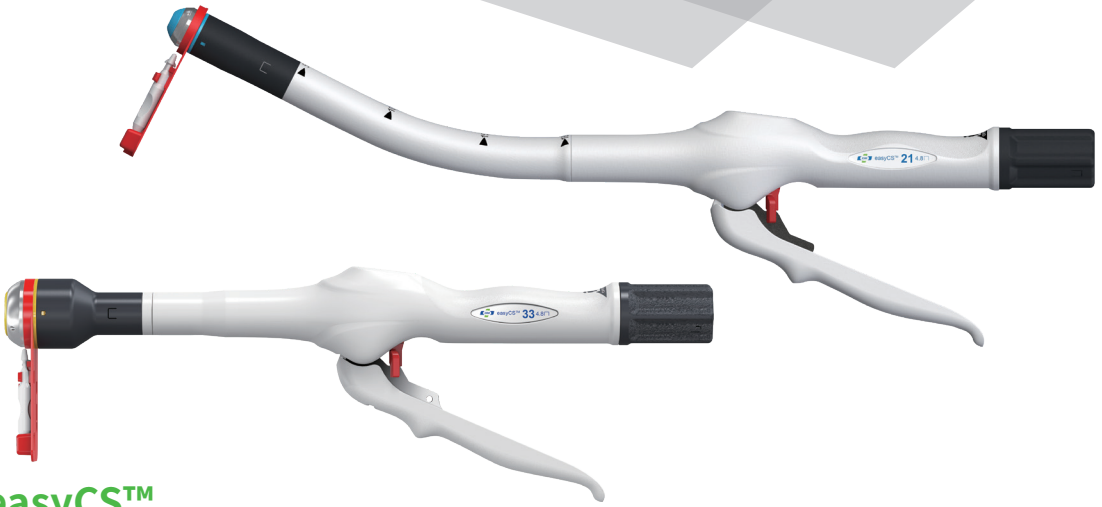


easyLC™ LINEAR CUTTER

Product Series	Product Code	Cartridge Color	Number of Staple Rows	Tissue Thickness	Reload Included	Max Firings	EA/BX
LC	LCE60X	/	4	/	No	8	10
LC	LCE80X	/	4	/	No	8	10
LC	LCE100X	/	4	/	No	8	10
LC	LCE60	White	4	Vascular/thin	Yes	8	10
LC	LCE60B	Blue	4	Regular	Yes	8	10
LC	LCE60G	Green	4	Thick	Yes	8	10
LC	LCE80	Blue	4	Vascular/thin	Yes	8	10
LC	LCE80G	Green	4	Thick	Yes	8	10
LC	LCE100	Green	4	Thick	Yes	8	10
LC	LCE100B	Blue	4	Regular	Yes	8	10



Product Series	Product Code	Cartridge Color	Number of Staple Rows	Tissue Thickness	Open Staple Height	Closed Staple Height	EA/BX
LC-Cartridge	LCC60W	White	4	Vascular/thin	2.5±0.2	1.0-1.5	48
LC-Cartridge	LCC60B	Blue	4	Regular	3.8±0.2	1.5-2.0	48
LC-Cartridge	LCC60G	Green	4	Thick	4.8±0.2	2.0-2.5	48
LC-Cartridge	LCC80B	Blue	4	Regular	3.8±0.2	1.5-2.0	48
LC-Cartridge	LCC80G	Green	4	Thick	4.8±0.2	2.0-2.5	48
LC-Cartridge	LCC100B	Blue	4	Regular	3.8±0.2	1.5-2.0	48
LC-Cartridge	LCC100G	Green	4	Thick	4.8±0.2	2.0-2.5	48



easyCS™

Product Series	Product Code	Shaft Length	Open Leg Length	Closed Staple Height	Head Diameter	Cutting Diameter	EA/BX
CS	CS2135	18mm	3.5	1.0-1.6mm	21mm	12.4mm	4
CS	CS2148	18mm	4.8	1.0-2.5mm	21mm	12.4mm	4
CS	CS2535	18mm	3.5	1.0-1.6mm	25mm	16.4mm	4
CS	CS2548	18mm	4.8	1.0-2.5mm	25mm	16.4mm	4
CS	CS2935	18mm	3.5	1.0-1.6mm	29mm	20.4mm	4
CS	CS2948	18mm	4.8	1.0-2.5mm	29mm	20.4mm	4
CS	CS3148	18mm	4.8	1.0-2.5mm	31mm	22.4mm	4
CS	CS3348	18mm	4.8	1.0-2.5mm	33mm	24.4mm	4

easyCS™ ULAR

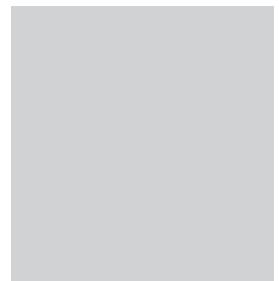
Product Series	Product Code	Shaft Length	Open Leg Length	Closed Staple Height	Head Diameter	Cutting Diameter	EA/BX
CS	CS2150EA	18mm	5.0	/	21mm	/	4
CS	CS2550EA	18mm	5.0		25mm		4
CS	CS2050EA	18mm	5.0		29mm		4
CS	CS3350EA	18mm	5.0		33mm		4

Energy



easyUS™

Product Series	Product Code	Compatible with	EA/BX
US Generator	ES01	All easyUS™ shears	1
Generator cart	eTR01	ES01	1
US Footswitch	FSU01	ES01	1
US Handpiece	eHP01	All easyUS™ shears	1





Product Series	Product Code	Shaft Diameter	Shaft Length	Jaw	EA/BX	Remark
US Shear	SHC14A	5mm	14mm	Curved	8	New appearance
US Shear	SHC23A	5mm	23mm	Curved	4	New appearance
US Shear	SHC36A	5mm	36mm	Curved	4	New appearance
US Shear	SHC45A	5mm	45mm	Curved	4	New appearance
US Shear	SHC23A	5mm	36mm	Curved	4	Old appearance
US Shear	SHC36A	5mm	45mm	Curved	4	Old appearance